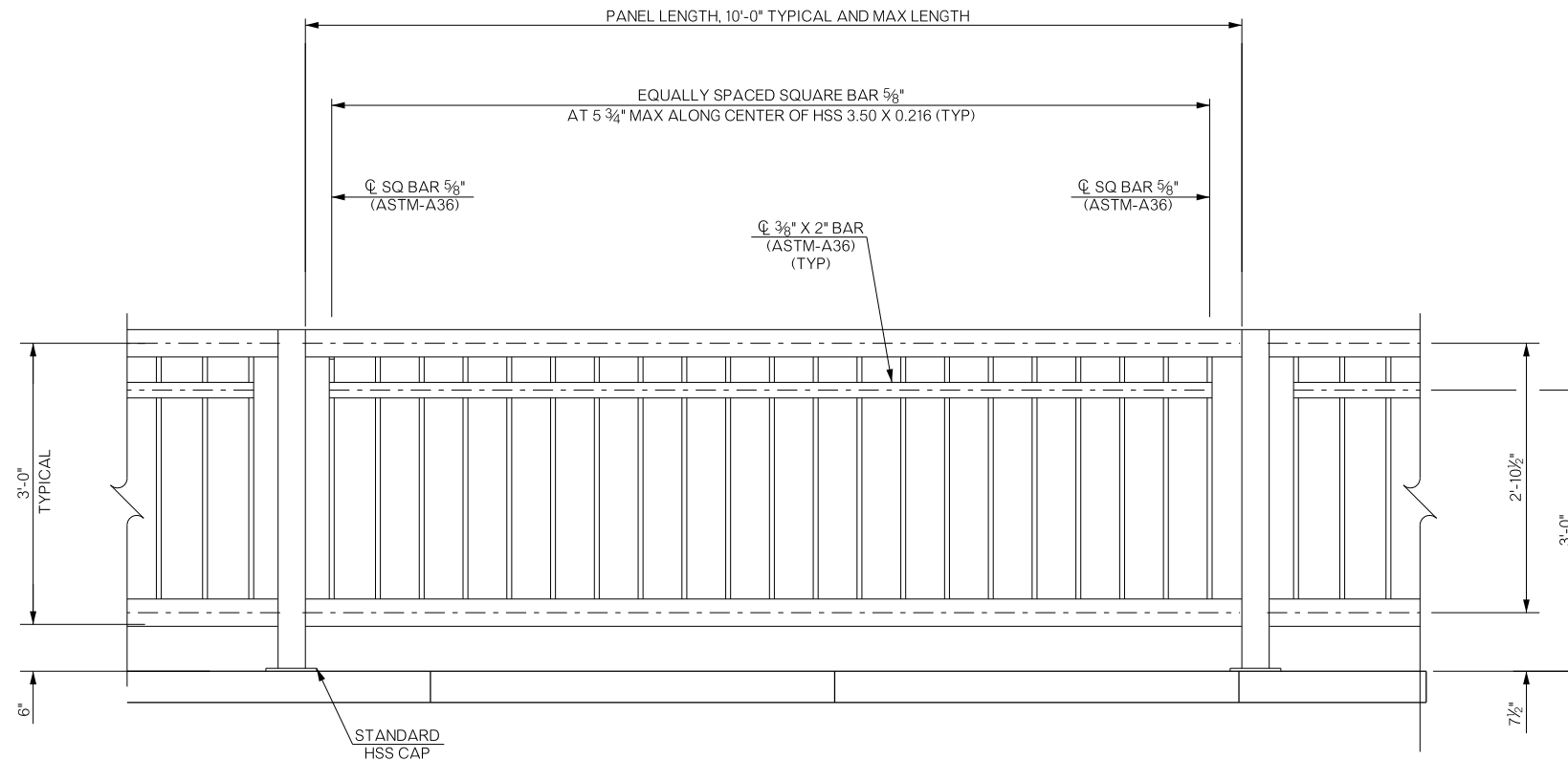
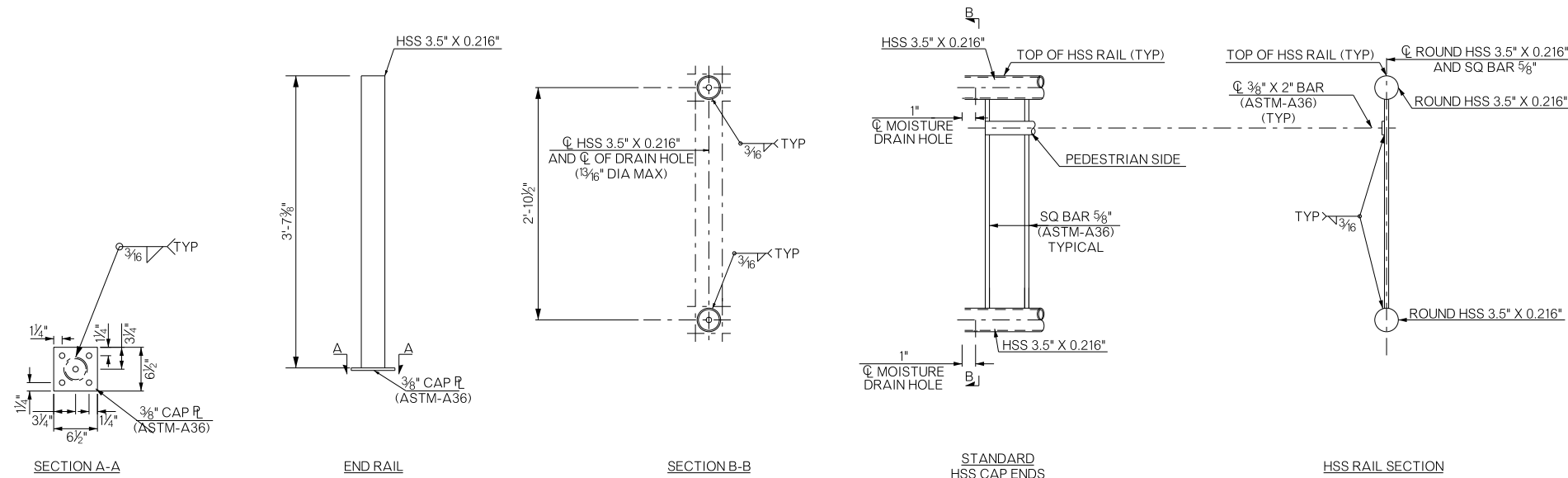


OKLAHOMA DEPARTMENT OF TRANSPORTATION					
FED. ROAD DIST. NO.	STATE	JOB PIECE NO.	FISCAL YEAR	SHEET NO.	TOTAL SHEETS
6	OKLA.				
DESCRIPTION		REVISIONS		DATE	



ELEVATION OF PEDESTRIAN RAIL



HSS RAIL DETAILS

MATERIAL NOTES:
 PROVIDE HSS IN ACCORDANCE WITH ASTM-A1085, A500 GRADE B OR A53 GRADE B. PROVIDE STEEL PLATE AND STEEL SQUARE BARS IN ACCORDANCE WITH ASTM-A36. CLEAN ALL STEEL RAILING INCLUDING HSS AND SQUARE BAR SECTIONS AS WELL AS CONNECTION PLATES AND APPLY PAINT IN ACCORDANCE WITH SECTION 512 OF THE STANDARD SPECIFICATIONS. USE SHOP APPLIED PAINT FOR BOTH COATS, TOUCHING UP AS NECESSARY FOLLOWING CONSTRUCTION TO THE SATISFACTION OF THE ENGINEER. COLOR FOR HAND RAILING COMPONENTS SHALL BE FS 30475. REINFORCING STEEL SHALL BE GRADE 60, EPOXY COATED.

ANCHOR BOLTS SHALL BE 5/8" DIAMETER THREADED RODS MEETING REQUIREMENTS OF ASTM-A36 WITH ONE HEX NUT AND ONE HARDENED STEEL WASHER PER BOLT. ANCHOR BOLTS SHALL BE ANCHORED USING AN ODOT APPROVED EPOXY FROM THE APPROVED PRODUCTS LIST. EPOXY ANCHORAGE SYSTEMS USED SHALL BE IN ACCORDANCE WITH SUBSECTION 701.13 OF THE STANDARD SPECIFICATIONS FOR HIGHWAY CONSTRUCTION AND ANCHORED ACCORDING TO THE MANUFACTURER'S MINIMUM SPECIFICATIONS TO A DEPTH OF NO LESS THAN 3 1/2". FOR ESTIMATING PURPOSES, THE PEDESTRIAN RAIL INCLUDES: 22.0 LB STEEL (NON-REINFORCING) PER LINEAR FOOT.

PLAN NOTES:
 THIS RAIL IS TO BE PAID FOR BY PAY ITEM: 622(A) 4746 PIPE RAILING.

CONSTRUCTION NOTES:
 ROUND OR CHAMFER EXPOSED EDGES OF HSS RAIL AND HSS CAPS TO APPROXIMATELY 1/16" BY GRINDING. TERMINATE HSS 3.500" X 0.216" AS SHOWN ON ONE END ONLY FOR EACH HSS RAIL PANEL. TERMINATE BAR 3/8" X 2" AS SHOWN ON EACH END OF HSS RAIL PANEL. SQ BAR 5/8" SHALL BE PLUMB (TRUE VERTICAL).

DESIGN		OKLAHOMA DEPARTMENT OF TRANSPORTATION ROADWAY DESIGN DIVISION					
DRAWN							
CHECKED							
APPROVED							
SQUAD	GREEN						
COUNTY	LOGAN	HIGHWAY	SH-33	STATE JOB NO.	21860(04)	SHEET NO.	R028